



337

## FOTODOKUMENTATION

ERWEITERUNG Bildungszentrum um ein Projekt- und Innovationcenter PIC mit Neuorganisation des Küchen- und Restaurantbereich | Homberg / Ohm

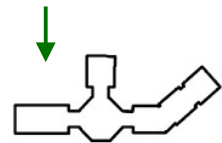
Stand: 12. Juli 2023



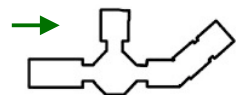
Foto\_01  
Luftaufnahme Bestand  
(Google Maps)



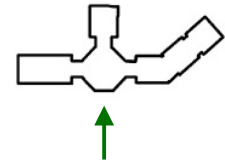
Foto\_02  
Haupteingang  
Bauteil M



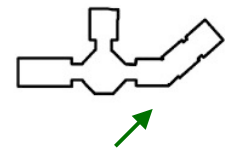
Foto\_03  
Haupteingang



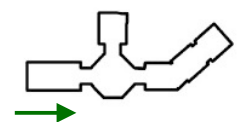
Foto\_04  
Haupteingang  
Bauteil M



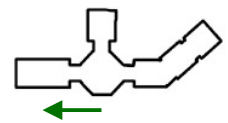
Foto\_05  
Südfassade  
Bauteil M



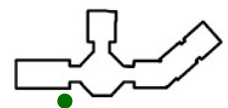
Foto\_06  
Südfassade  
Bauteil B



Foto\_07  
Südfassade  
Bauteil A



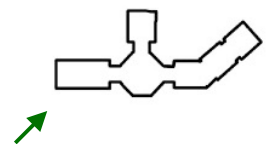
Foto\_08  
Südfassade  
Bauteil A



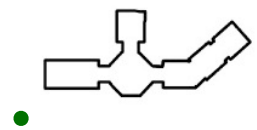
Foto\_09  
Überdachung UG  
Bauteil A Südfassade



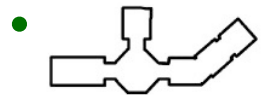
Foto\_10  
Bauteil A  
Westfassade



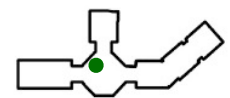
Foto\_11  
Westfassade  
Blick Lärchenweg



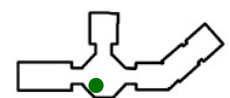
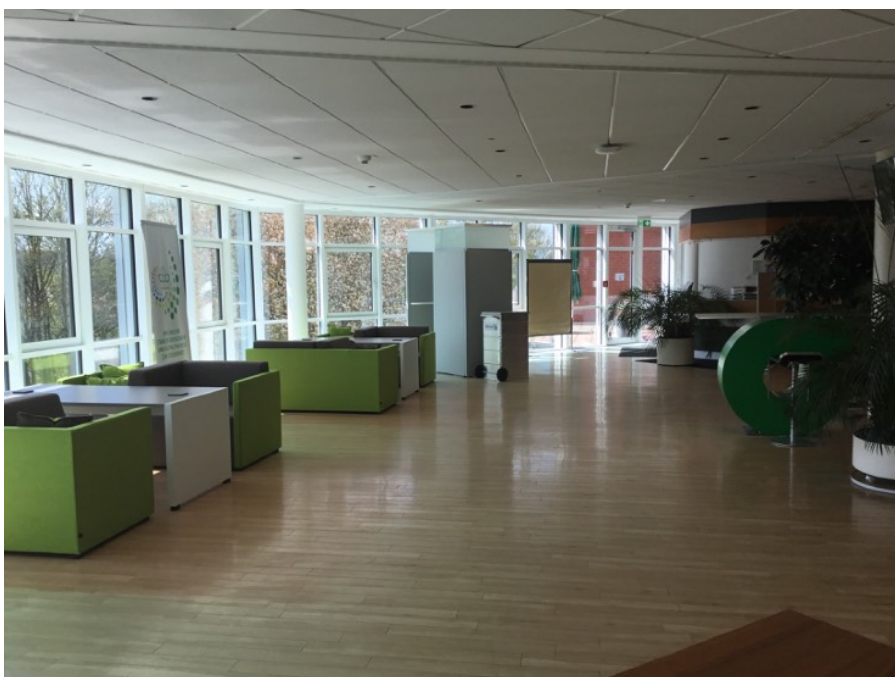
Foto\_12  
Zufahrtsstraße  
Blick Lärchenweg



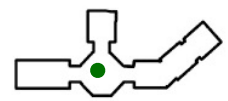
Foto\_13  
Park-Situation  
Lärchenweg



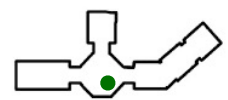
Foto\_14  
EG Foyer  
Haupteingang



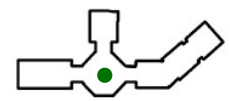
Foto\_15  
EG Foyer Blickrichtung  
Westen



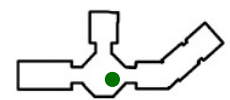
Foto\_16  
1.OG Bauteil M  
Blick Haupteingang



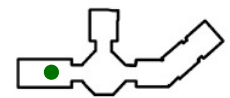
Foto\_17  
1.OG Bauteil M  
Speisesaal



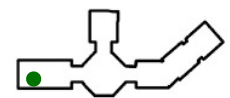
Foto\_18  
1.OG Bauteil M  
Kuppel



Foto\_19  
1.OG Bauteil M



Foto\_20  
UG  
Bauteil A



Foto\_21  
1.OG  
Bauteil A